



Australian  
National  
University

# USE AND PERCEPTIONS OF SEXUAL AND REPRODUCTIVE HEALTH SERVICES AMONG YOUNG NORTHERN THAI PEOPLE

**Arunrat Tang**

Bridging the Research-Policy Divide,

Supported by the AusAID Australia Leadership Awards Fellowship Program,

The Australian National University

## Aim of the research

- To find out the experiences and perspectives of young people with regard to obstacles to their safe sexual health and desirable health services.
- Findings are intended to guide the development of health services to improve sexual and reproductive health among young people.

# People who were intended to benefit

- Young people
- Parents/guardians
- Community
- Health providers
- Related agencies



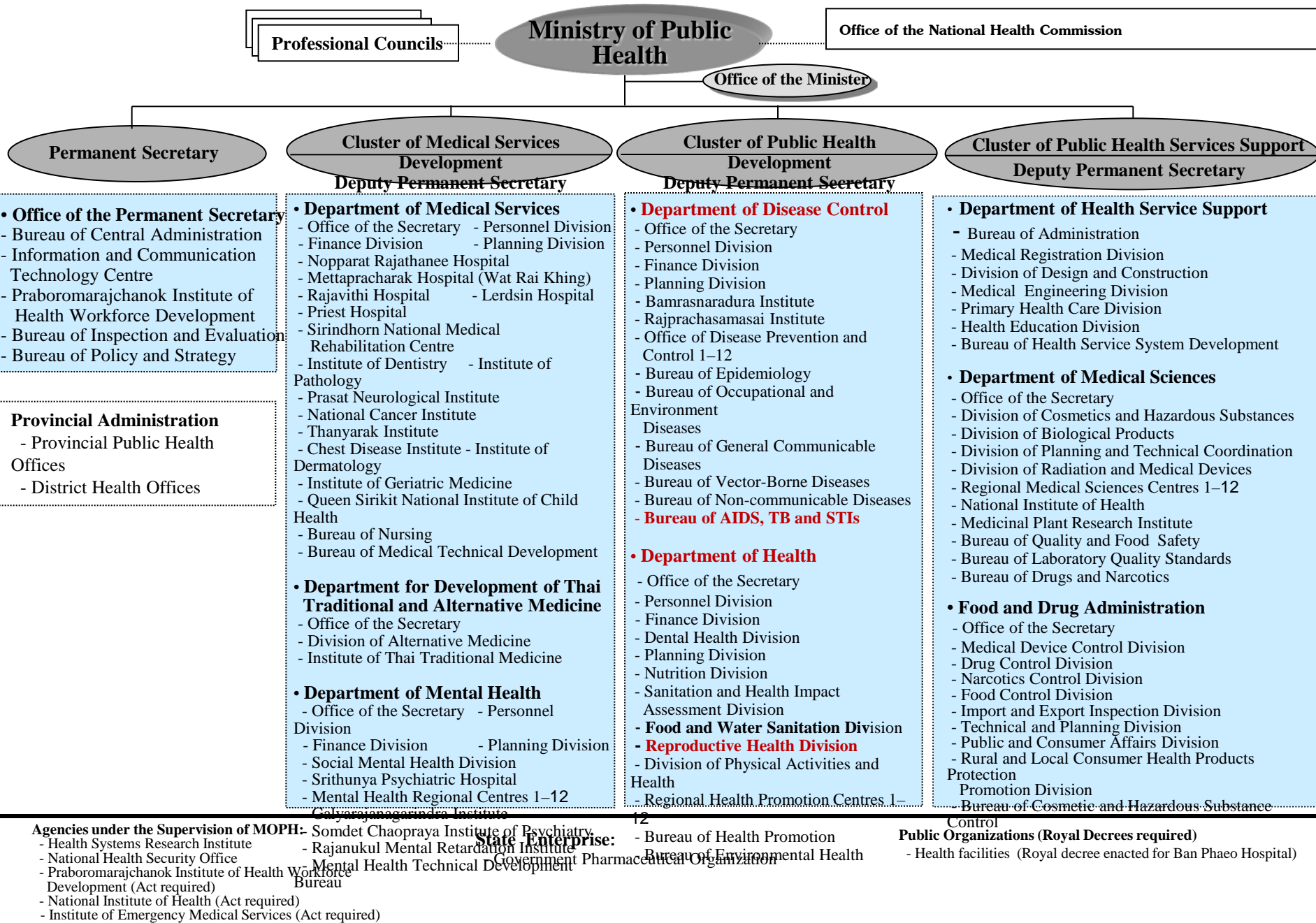
Photo courtesy of Health Promotion Center Region 10, Chiang Mai

# Structure of the policy system



Ministry of Public Health (MOPH)

# Organization of Ministry of Public Health



Source: Ministerial Regulations of the Ministry of Public Health, 2002

Note: Public organizations and agencies under the supervision of the MOPH are not under any of the clusters



# Ministry of Public Health

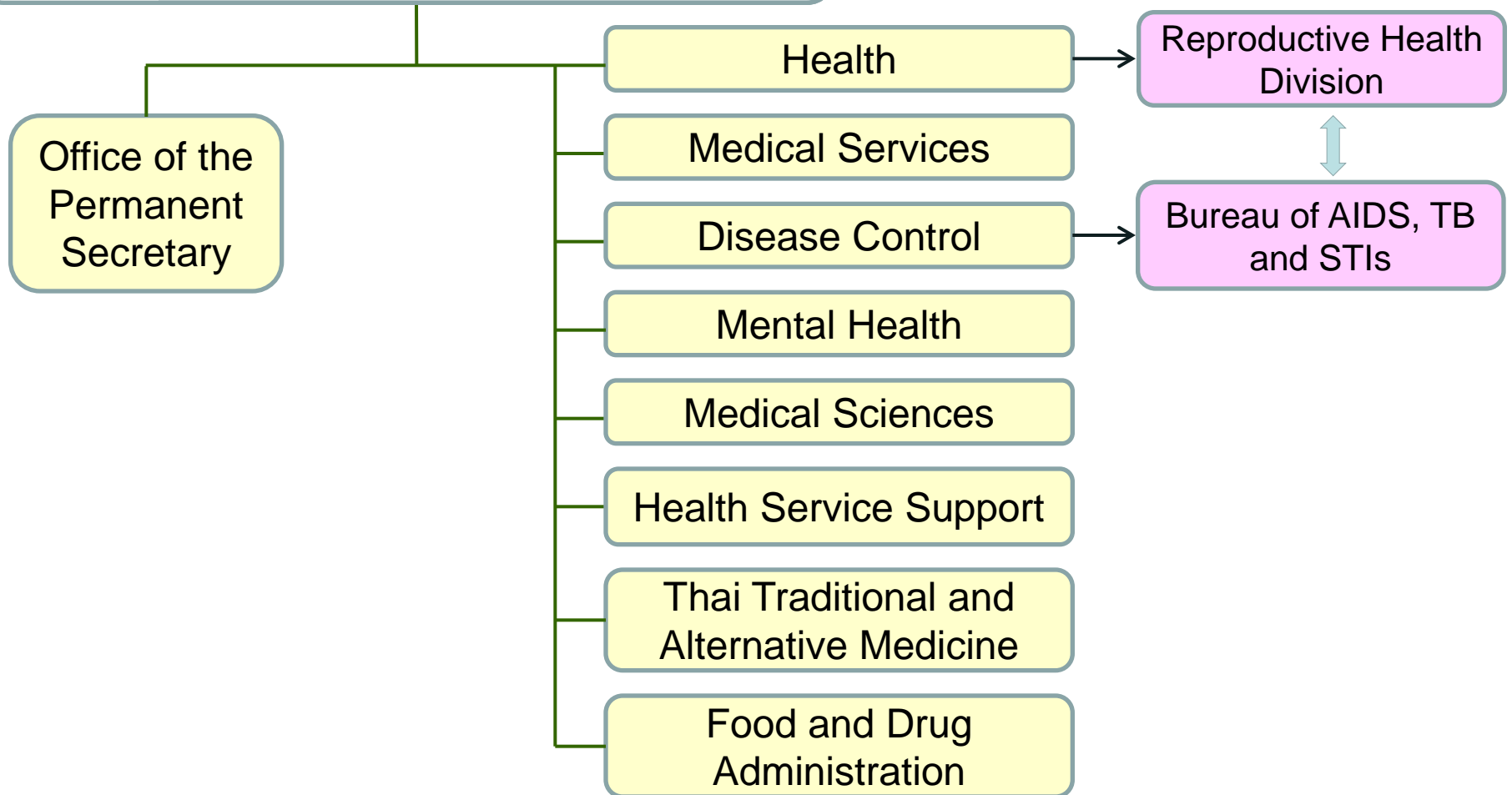


Diagram by Cha-aim Pachanee

# The process of policy system: Multiple streams model

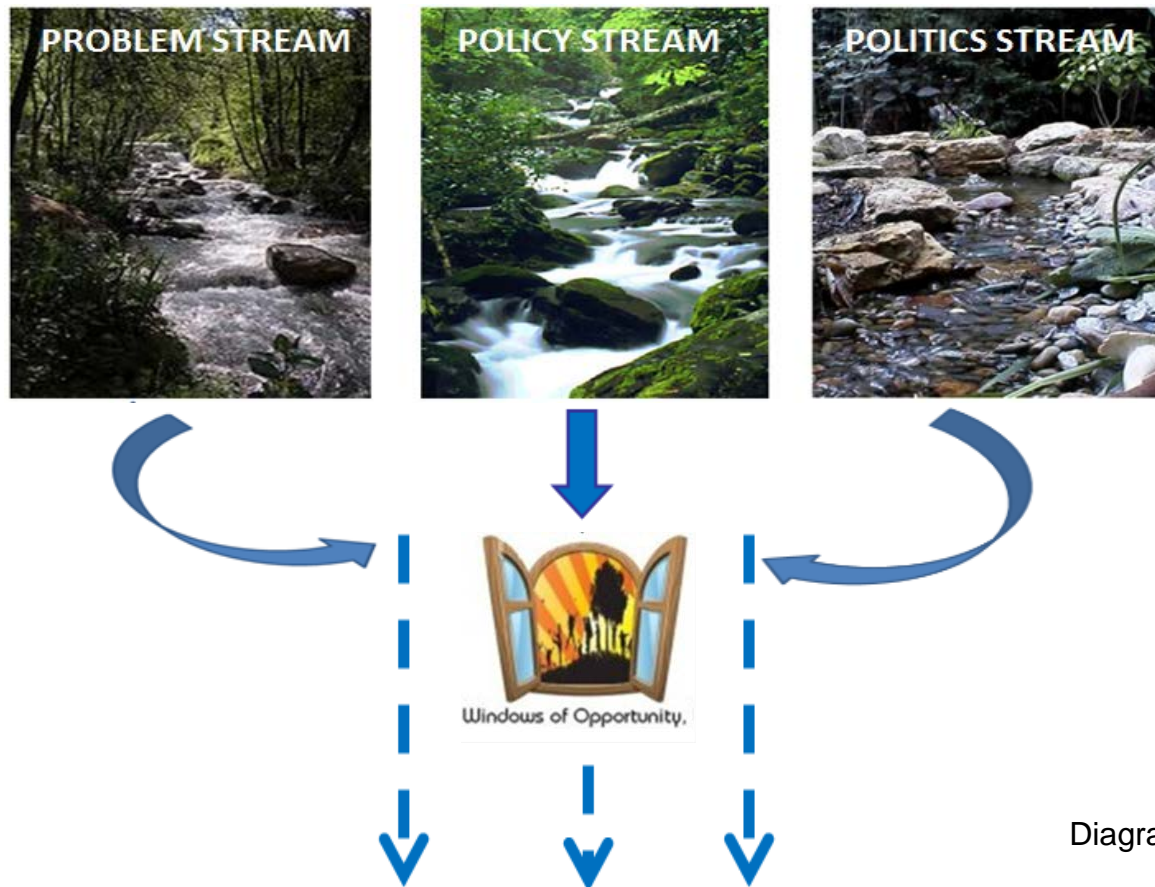
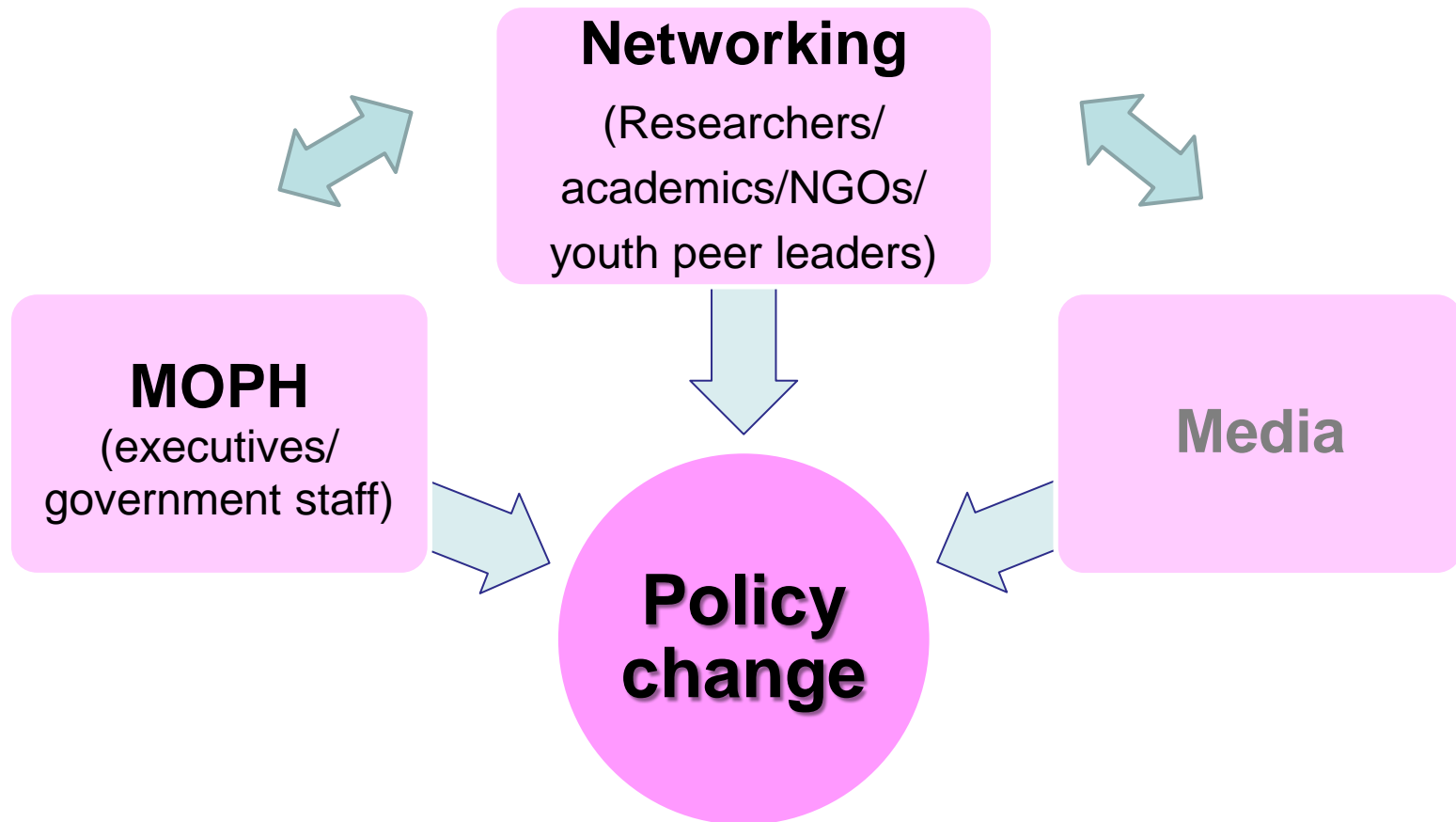


Diagram by Clarissa Domingo

## Scoping: Thinking about all possibilities

- Share the ideas in the conferences
- Publish papers
- Share results with NGOs / relevant organizations / young people
- Send a report to MOPH
- Talk to the executives at MOPH
- Talk to the media

# Boundary setting: What was in or out or important?



# Framing

Reproductive Health Division (Department of Health)



# Framing

Bureau of AIDS, TB and STIs (Department of Disease Control)



# Taking values into account

Brighter future for the young generation  
(human rights, equality in health services)



## Harnessing ‘good’ differences and managing ‘bad’ differences

- Harnessing ‘good’ differences: created networking to share research findings, reports, evidence, solutions (academics, GOs, NGOs, related agencies, peer leaders)
- Managing ‘bad’ differences: discussed with parents, teachers, communities and mass media to find out optimal solutions for young people

## How was the research support provided?

- Communication
  - Published papers
  - Shared research results with NGOs / relevant organizations / young people
  - Sent a research report to local government staff & MOPH
  - Talked to the executives at MOPH (a few times only)

# Who in the research team provided the support for policy development?

I gave inputs in the meetings at MOPH and provincial health offices.



# When was the research used to influence policy development?

The research used at the end when research findings, recommendations and reports were available



# Overall context

- Rapid development of information technology
- Ways of living have changed.
- Young Thai people: healthier, more urbanized and better educated
- Downside: more widespread adoption of unhealthy lifestyles  
“unsafe premarital sexual behaviors”

# Authorisation

- I work as a researcher at Chiang Mai University.
- I wrote a research proposal and asked for funding support from the Wellcome Trust, UK, (under a PhD program at ANU).
- Collected the data in Chiang Mai
- Provided research input to MOPH for policy and practice change

# Organisational facilitators and barriers

## ■ Facilitators

- Structure in my organisation helped to conduct this research topic (although this research did not help the research institute to gain more income)
- MOPH needed reports / research results from different geographical areas.

## ■ Barriers

- Inability to control mass media and community interpretations of the research results

# Outcomes of providing research support

Research Surveillance Report



**Department  
of Disease  
Control,  
MOPH**

Launched a YPFS  
Program (Youth and  
PLWHA Friendly  
Services) funded by  
Global Fund  
(covered 29 out of 77  
provinces)

There is an  
ongoing  
program on  
YPFS.

Young people  
and community  
have benefits  
from this  
program.



Report Surveillance Research

# Outcomes of providing research support

Research      Surveillance  
                                 Report



**Department  
of Health,  
MOPH**

**Launched a new  
policy on setting  
up YFHS Program  
(Youth Friendly  
Health Services)  
(covered all  
provinces)**

**There is an  
ongoing  
program on  
YFHS.**

**Young people,  
parents and  
school teachers  
have benefits  
from this  
program.**



                                 Report  
Surveillance  
Research



*Thank you*